

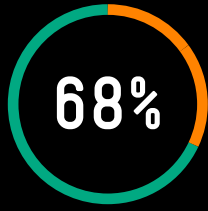
# HPE GREENLAKE CLOUD SERVICES

Bringing the cloud to your apps and data wherever they are



HPE GreenLake offers choice in how you satisfy the unique needs of your apps and data. But doing hybrid cloud right isn't always as easy as you'd like.

- » How do you evolve to a cloud ops model across public and private?
- » How do you navigate the management complexities of a hybrid environment?
- » How do you transform your people and processes?



see data security and compliance as a barrier to public cloud adoption<sup>1</sup>



of IT decision-makers said they were pursuing an integrated on-premises/off-premises environment as part of their overall strategy<sup>2</sup>



of companies will use two or more infrastructure-as-a-service (IaaS) and software-as-a-service (SaaS) providers by 2021<sup>3</sup>

## What does hybrid cloud done right look like?

1

A consistent cloud experience for managing all apps and workloads

2

On-demand access to resources and insights for high-velocity innovation

3

Visibility, compliance, and control across your IT estate

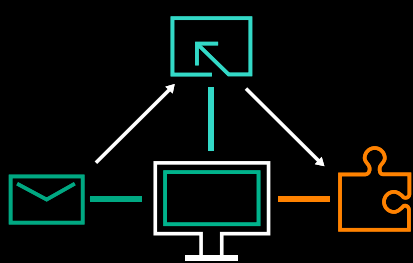
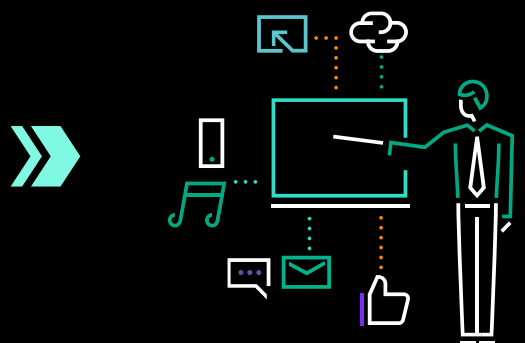


**CIOs must transform their operating model to see material benefits, including shorter time to value, improved business agility, and reduced business risk.<sup>4</sup>**

HPE GreenLake brings the cloud to your apps and data, wherever they reside, by providing a robust as-a-service portfolio that drives flexibility and speed to market.

### ENABLES THE CLOUD EXPERIENCE EVERYWHERE

Brings the point and click, self-service and on-demand cloud experience, resource elasticity and a pay-per-use model to your on-premises IT



### UNIFIES YOUR HYBRID EXPERIENCE

Unifies and consolidates the experience across your hybrid environment (private and multiple public clouds), transforming IT ops to cloud ops

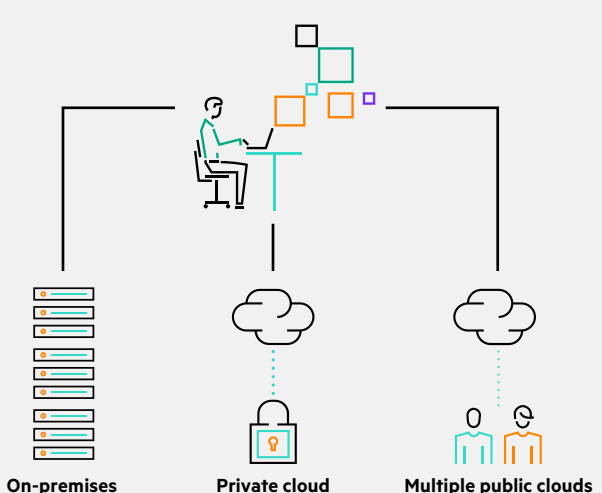
### PROVIDES GREATER CONTROL AND INSIGHT

Enhances governance, control, and visibility, providing comprehensive compliance capabilities and broader cost insights and analytics for cost optimization



With a unified services view across your on-premises IT, private and public clouds, HPE GreenLake Central helps you deploy services faster, gain holistic insights across your IT estate, and simplify management of your hybrid cloud—all with the ease of a point and click experience.

### HPE GREENLAKE CENTRAL



**LEARN MORE AT**  
[hpe.com/greenlake](https://hpe.com/greenlake)

<sup>1</sup> 451 Research, "Having Your Cake and Eating It Too: Bringing the Public Cloud Experience to the On-Premises Datacenter," October 2019  
<sup>2</sup> 451 Research, "Offloading hybrid cloud Management for Strategic Advantage," June 2019  
<sup>3</sup> McKinsey & Company, "Transforming infrastructure operations for a hybrid-cloud world," October 2019  
<sup>4</sup> McKinsey Digital, "Unlocking business acceleration in a hybrid cloud world," 2019